

# CLASSY urban oasis

**TOWN  
CASTLE**

FACING NH47, METRO PILLAR 320



Immerse yourself in sophisticated living, where every detail whispers elegance. Live your dream in a haven that embodies timeless style and urban comfort.

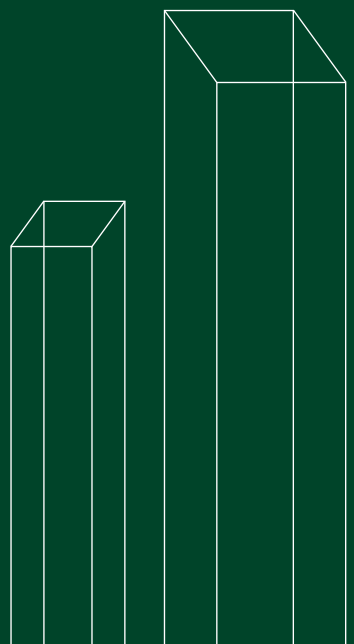
**A HAVEN OF URBAN  
COMFORT, INVITING THOSE  
READY TO EMBARK ON A**

**NEW  
JOURNEY.**

# WELCOME TO TOWNCASTLE

Your gateway to urban living! Nestled near Metro, with a prime spot facing National Highway 47, adjacent to Kalamassery Municipal Office, Kochi, this project redefines city life. These eco-friendly and luxurious 1 BHK residences offer a lifestyle that combines urban accessibility with sustainable living.

With bus stop and Metro located within 300 metres, get easy access to hospitals, schools, hotels, malls, and cinemas, making everyday life a breeze. Whether you're seeking your own compact home or a smart investment, TownCastle offers the best of both worlds. Elevate your lifestyle with us, a seamless blend of comfort, accessibility and growth. Experience urban living the way it's meant to be.



# Live in the midst of convenience

■ Road  
 ■ Metro Phase 1  
 ■ Metro Phase 2  
 ■ Metro Phase 3  
 ■ Metro Station



	Kms	Time
<b>CONNECTIVITY</b>		
NH 47	0 Mtr	1 Min
BUS STOP	50 Mtrs	1 Min
CUSAT METRO STATION	300 Mtrs	1 Min
ALUVA RAILWAY STATION	8 Kms	16 Mins
ERNAKULAM TOWN RAILWAY STATION	8 Kms	11 Mins (MRT)
KALAMASSERY RAILWAY STATION	3.5 Kms	6 Mins
COCHIN AIRPORT	19 Kms	30 Mins

<b>EDUCATIONAL INSTITUTIONS</b>		
SCMS	3 Kms	5 Mins
RAJAGIRI SCHOOL	1.5 Kms	5 Mins
NAJATH PUBLIC SCHOOL	50 Mtrs	1 Min
CUSAT	500 Mtrs	2 Mins
NUALS	6 Kms	12 Mins
MODEL ENGINEERING COLLEGE	3.5 Kms	8 Mins
BHARAT MATA COLLEGE	3.6 Kms	9 Mins
NAIPUNYA PUBLIC SCHOOL	3.6 Kms	9 Mins
AMRITA MEDICAL COLLEGE	5 Kms	15 Mins
IIM campus (upcoming)	400 Mtrs	2 Mins

<b>HEALTH CARE</b>		
KINDER HOSPITAL	600 Mtrs	2 Mins
MEDICAL COLLEGE KOCHI	5 Kms	10 Mins
RENAI MEDICITY	4.5 Kms	10 Mins
KOTTAKKAL ARYA VAIDYASHALA	4.4 Kms	10 Mins
SUNRISE HOSPITAL	5 Kms	12 Mins
AMRITA MEDICAL COLLEGE	5 Kms	12 Mins
ASTER MEDICITY	7.5 Kms	15 Mins

<b>SHOPPING AND BUSINESS ZONE</b>		
LULU MALL	2 Kms	5 Mins
GRAND MALL	2.2 Kms	5 Mins
OBERON MALL	3.7 Kms	9 Mins
DECATHLON	3.5 Kms	9 Mins
KINFRA	5.4 Kms	11 Mins
STARTUP VILLAGE	5.5 Kms	12 Mins
INFOPARK & SMARTCITY	8.5 Kms	18 Mins



# MODERN 1 BHK APARTMENTS FOR YOUNG COUPLE

Step into the future of urban living at TownCastle by Casadel Builders. For young couples seeking the perfect blend of comfort, accessibility, and growth, this is your dream come true. Our modern 1 BHK apartments offer affordable luxury and a prime location near the Metro. Create memories together at TownCastle. Your journey starts here.



# ACCESSIBLE LIVING FOR INDEPENDENT LIFE

TownCastle by Casadel Builders offers more than just apartments; it provides a pathway to independent living. With convenient access to hospitals, schools, malls, and cinemas, you can embrace a lifestyle where everything you need is within reach. Whether you're a young professional or a couple starting a new chapter, TownCastle promises the freedom and convenience to lead an independent life. Experience the joy of easy living and seize the opportunities that await you at TownCastle. This is where independence meets comfort, right at your doorstep.





# SMART INVESTMENT FOR A BETTER FUTURE

At TownCastle, we understand that choosing a home is not just about today; it's about securing a better future. Whether you're looking for your own residence or a savvy investment, our project combines both aspirations seamlessly. Investing in TownCastle means not only acquiring a comfortable living space but also a promising financial asset. Our commitment to quality ensures that your property value will appreciate over time, making it a smart financial decision. Casadel Builders has a legacy of crafting homes that withstand the test of time, assuring you lasting value for generations to come. Secure your future with TownCastle today.



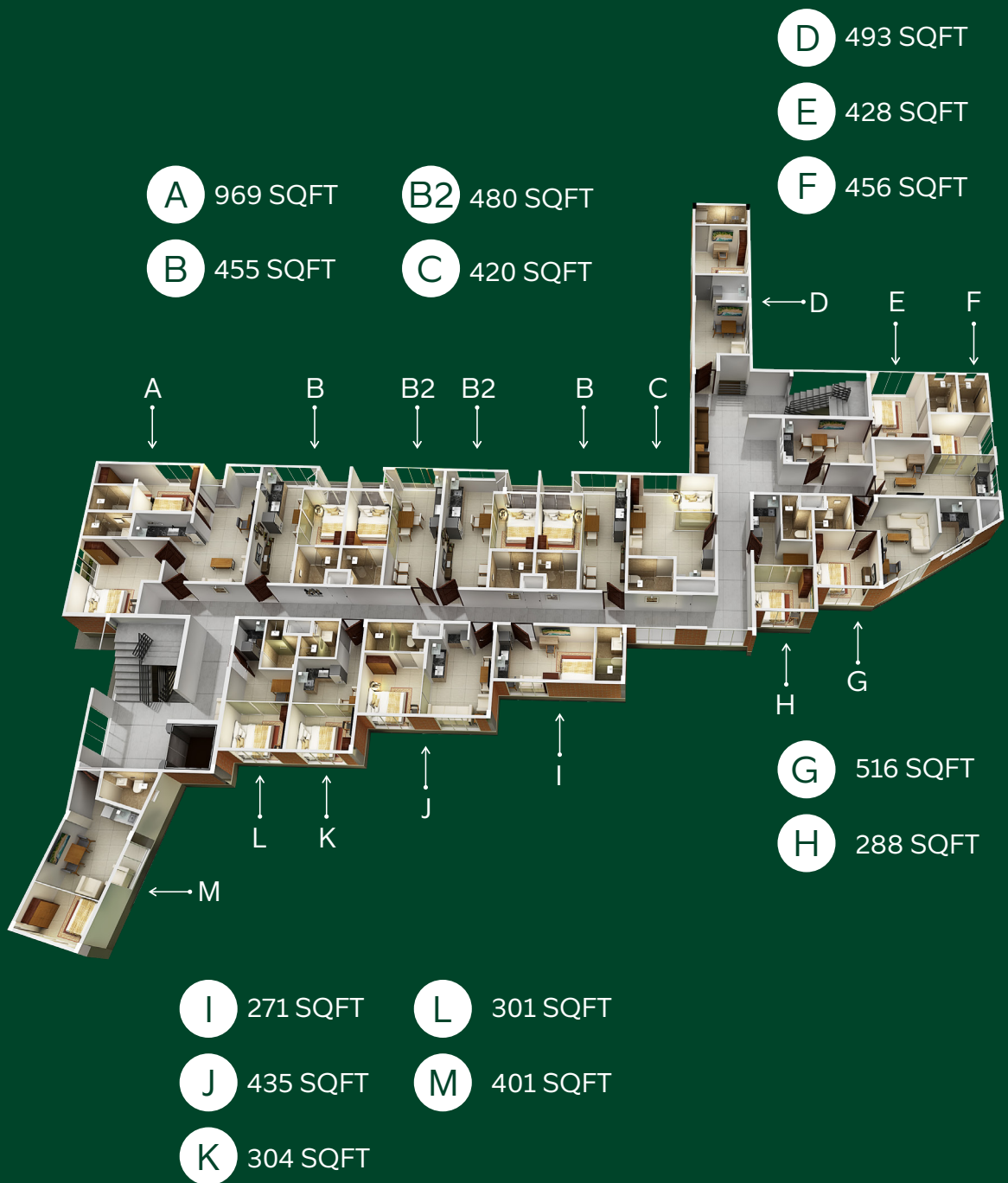


# ELEVATE YOUR LIFESTYLE

Experience urban living the way it's meant to be. At TownCastle, we've carefully crafted an environment that promotes growth and a sense of belonging. Elevate your lifestyle with us, and enjoy a seamless blend of comfort and accessibility.

Your journey to a better quality of life begins at TownCastle. Embrace the convenience, seize the opportunities, and create lasting memories in your new home.

# FLOOR PLAN



## Design it the way you want it

Smart Management of space ensures you have room for everything. Provision of piped Gas connection, common laundry and a guest lounge in every floor ensures optimal use of space. Innovative trends in Interior Design using foldable furniture like beds, iron boards and dining tables can open up space to suit your requirements. Extendable sofas are also a smart way to create more space when the need arises.

# INDIVIDUAL PLAN



Type B - 455 SQ.FT, 1 Bed Configuration



Type J - 435 SQ.FT, 1 Bed Configuration



# ACTUAL DIMENSION 3D VIEWS





# SPECIFICATION

## Structure

RCC framed structure with block partitions. Porotherm Bricks with Thermal Insulation used for external walls & designed for seismic consideration. Concrete grade and steel grade as per structural consultants' advice.



## Finishes

Internal Walls: Putty and Plastic Emulsion for internal walls and ceiling.  
Paint: Berger / Asian or equivalent.

## Electrification & Cabling

Our electrification and cabling system follows three phase power supply with concealed copper wiring and ISI approved PVC conduits. Adequate provisions for light, fan and power points are installed with modular switches of approved brands and are controlled by DBs, ELCBs, and MCBs. The rooms are furnished with facilities using wires and switches of trusted brands like Wipro, Panasonic, Legrand or equivalent. The piping is enabled by products of brands like Supreme, Finolex or equivalent.



## Flooring

A blend of luxurious granite and premium tiles will grace the entrance lobby, while 80 x 80 high-quality tiles will embellish the rooms and kitchen.



## Bathrooms

The bathroom walls are enveloped up to the height of 240 cms with wall tiles. The bathroom is furnished with high-end sanitary fixtures, concealed piping and premium quality fittings. The products of prominent sanitary fitting brands like Kerovit or Jaquar are used in the bathrooms.

## Doors & Windows

High quality internal and external doors are used. The bathrooms spot prime quality fiber doors and the windows are UPVC or Powder Coated High Quality Aluminium Windows.







# AMENITIES

Eco Friendly Apartments nestled in the heart of the city offering top notch amenities

Swimming Pool | Gym | Mini Library |

Surveillance Cameras | Barbecue | Open Party Deck |

Common Restrooms | Indoor Games |

Piped Gas Connection | Automated Access Control |

Generator | Intercoms | Natural well water |

Solar Powered Common Area | Meditation Deck |

Reflexology Path | Lift | Solar Water Heater |

Common Laundry



# ECO FRIENDLY FEATURES

## Porotherm Bricks



We prioritize energy efficiency and sustainability, which is why we've chosen Porotherm bricks for construction. These remarkable bricks offer superior insulation, reducing energy consumption and ensuring a comfortable, eco-friendly living environment for our residents.

## Solar-Powered Common Area



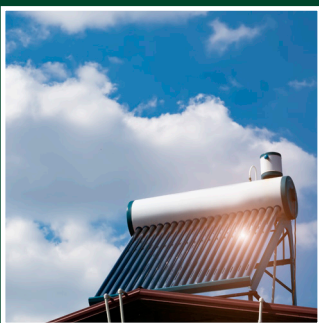
With Solar power covering the electricity needs of common area partially, common electricity charges will be much lesser than usual. Harnessing the sun's energy, this amenity not only reduces our carbon footprint but also provides a sustainable and eco-friendly space for residents to gather and relax, all while enjoying the benefits of clean, renewable energy.

## Natural Well



Experience the refreshing convenience of natural well water right at your doorstep in TownCastle apartments. Say goodbye to water worries and enjoy the purity of this natural amenity within our community.

## Solar Water Heater



We provide the convenience of a solar water heater as a premium amenity. This eco friendly feature ensures residents have access to hot water while reducing their environmental impact through renewable energy utilization.



# AWARDS & EVENTS



QueensTown launch by Cine actress,  
Ms. Mareena Michael Kurisingal



Business Excellence Award from Mr. Kochouseph Chittilappilly,  
Mr. V. P. Nandakumar and Mr. Joy Alukkas



Innovative Builder Award from J. Chinchu Rani  
Honourable Minister of Kerala State



TownWalk Launch by Mahir Al  
Nooman (Alshamsi Group) @ UAE



Casadel Foundation Launch by  
PC Musthafa (ID Foods) @ Grand Hyatt



TownWalk Pre-Launch by  
Mr. Shaan Rahman, Music Director



TownSuites Launch by Shri Antony Raju,  
Transport Minister of kerala



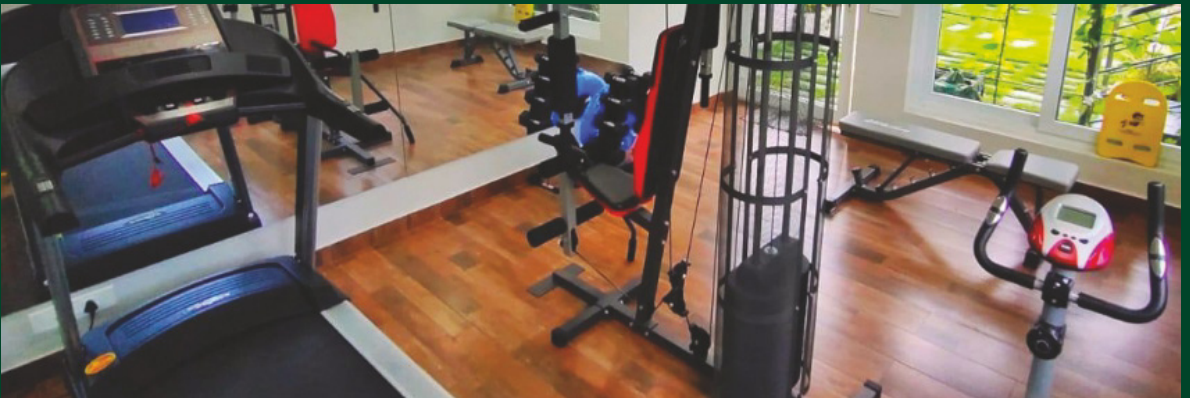
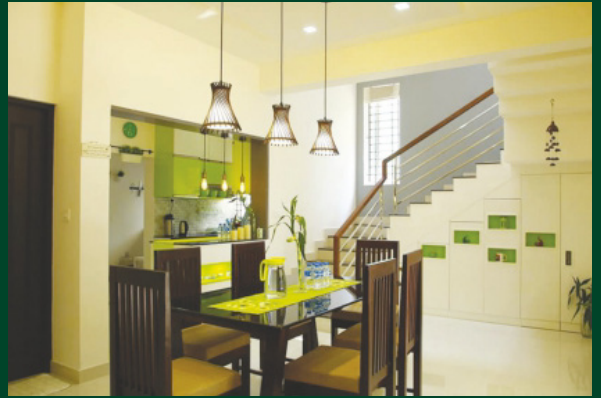
Brand Leadership Awards 13th  
Regional Employer Branding Awards



Dancing Woods Projects Launch  
by Mr. Shamim Rafeek, Corporate Trainer




# ACTUAL PHOTOS





# PROJECTS





# CASADEL

BUILDERS  
— STAY HAPPY —

✉ [sales@casadel.com](mailto:sales@casadel.com)

☎ +91 8089 003 003  
+91 8089 004 004  
+91 7736 004 004

Australia: +61 451 018 373  
USA: +1 732 397 4451  
Germany: +49 151456 78792

🌐 [www.casadel.com](http://www.casadel.com)

📍 Casadel Builders India Pvt. Ltd  
6/838 B-2, Seaport Airport Road,  
Vallathol Junction, Thrikkakara P.O,  
Kochi 682021

📷 [/casadeldevelopers](https://www.instagram.com/casadeldevelopers)

scan to reach us

